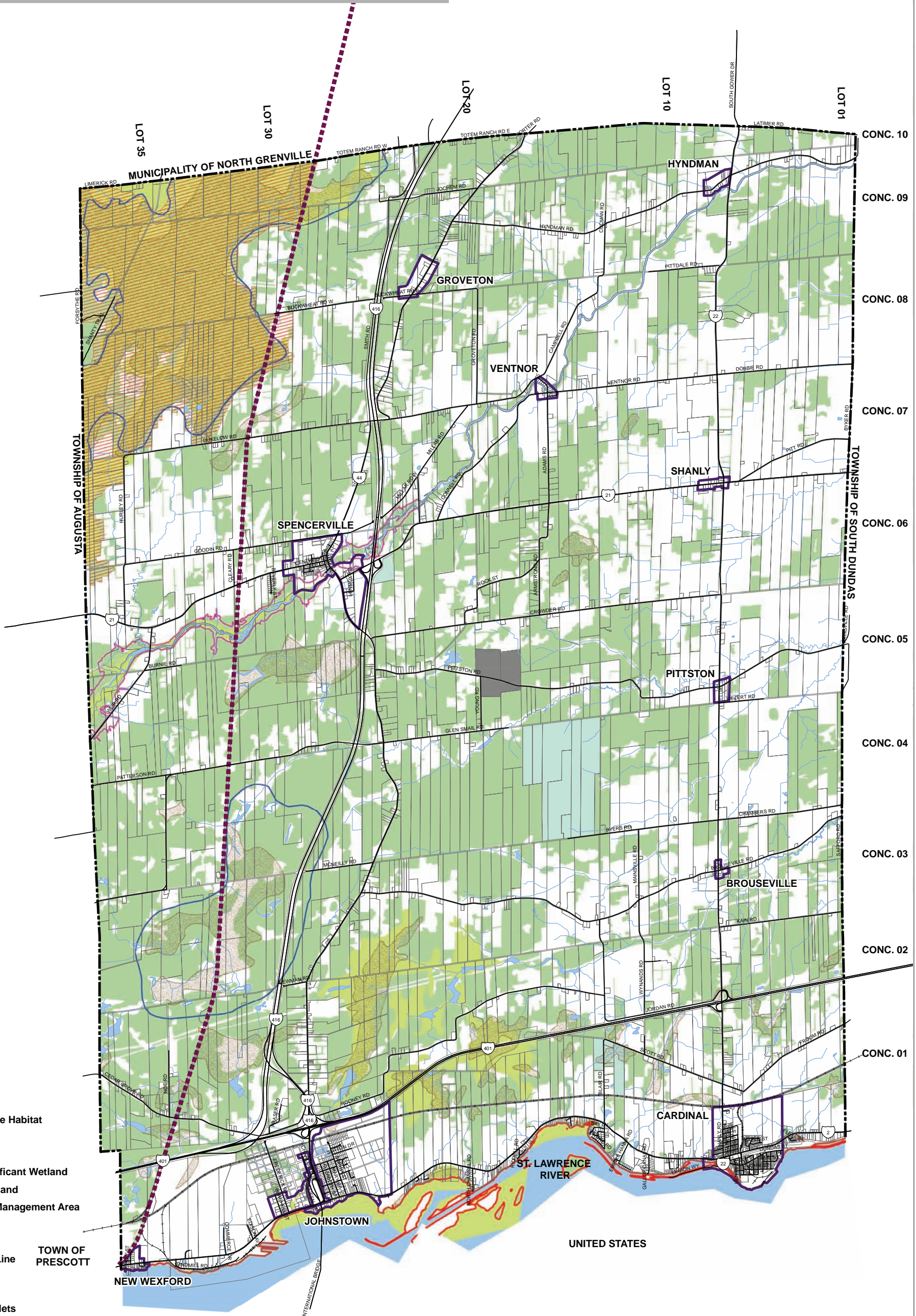
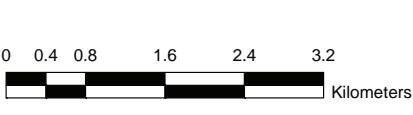


# Schedule B - Development Constraints



- Legend**
- Organic Soil
  - ANSI
  - Significant Wildlife Habitat
  - Floodplain
  - Fish Habitat
  - Provincially Significant Wetland
  - Significant Woodland
  - Licensed Waste Management Area
  - Closed Landfill
  - Roads
  - Abandoned Rail Line
  - Railways
  - Water Courses
  - Villages and Hamlets
  - Municipal Boundary



Drawings are produced by Stantec Consulting Ltd. with base information supplied by the United Counties of Leeds and Grenville (2008). Ontario Road Network used under Licence with the United Counties of Leeds and Grenville and the Ministry of Natural Resources. Property parcel boundaries used under Licence with the Teranet Enterprises Inc. Assessment Data used under Licence with the Municipal Property Assessment Corporation. Natural Resource Values Information from the Ontario Geospatial Data Exchange under Licence with the Ontario Ministry of Natural Resources copyright Queen's Printer for Ontario, 2007. Floodplain information is data owned and/or used under agreement with The Rideau Valley Conservation Authority and the South Nation Conservation Authority. © May 2010

