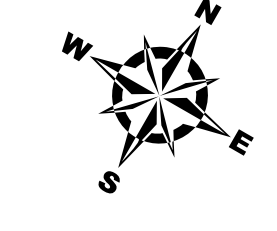
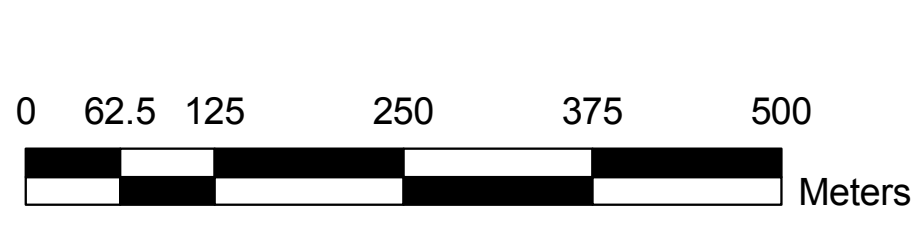
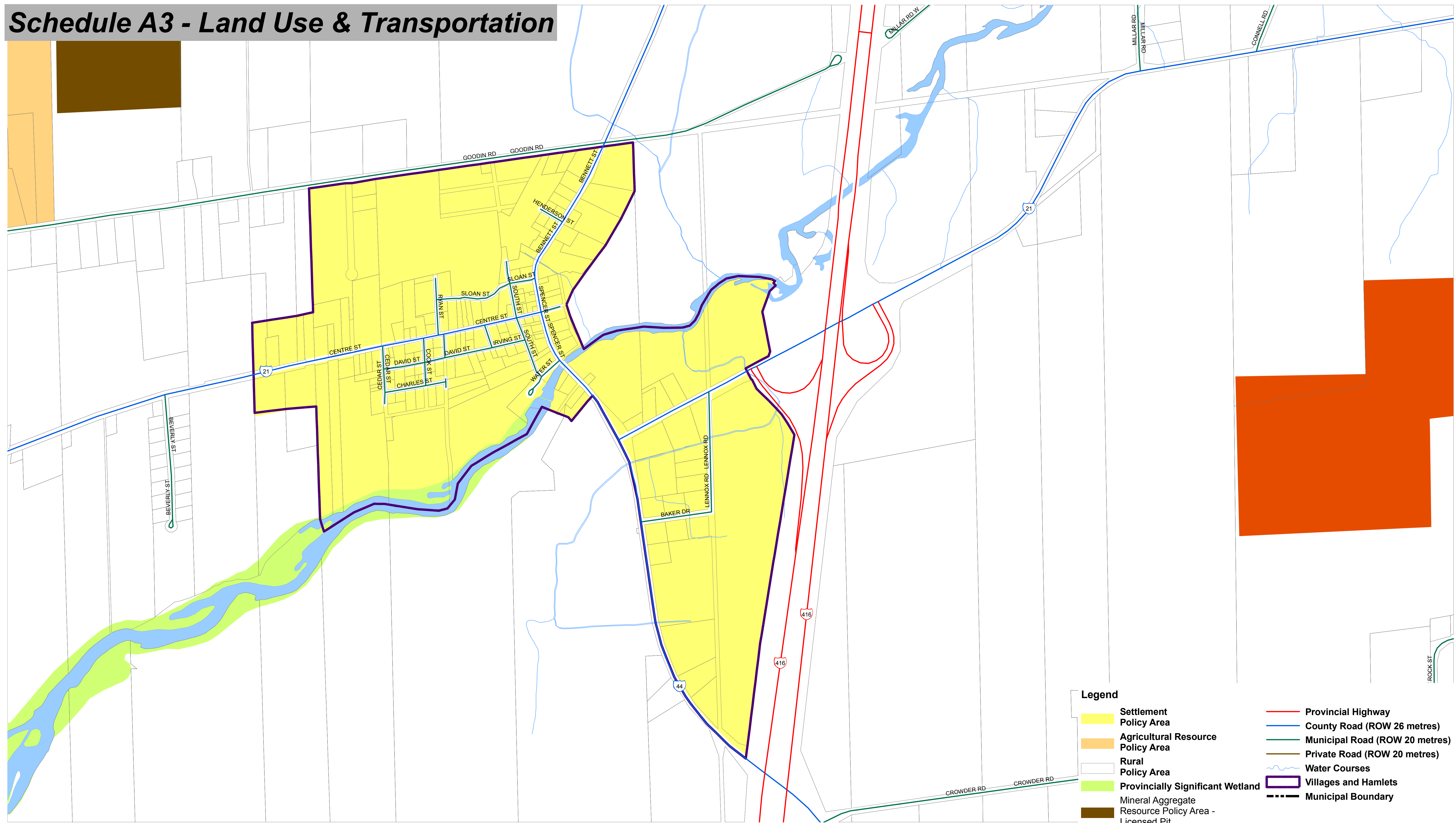


Schedule A3 - Land Use & Transportation



SPENCERVILLE

- Legend**
- Settlement Policy Area
 - Agricultural Resource Policy Area
 - Rural Policy Area
 - Provincially Significant Wetland
 - Mineral Aggregate Resource Policy Area - Licensed Pit
 - Mineral Aggregate Resource Policy Area - Licensed Quarry
 - Provincial Highway
 - County Road (ROW 26 metres)
 - Municipal Road (ROW 20 metres)
 - Private Road (ROW 20 metres)
 - Water Courses
 - Villages and Hamlets
 - Municipal Boundary

Drawings are produced by Stantec Consulting Ltd. with base information supplied by the United Counties of Leeds and Grenville (2008), Ontario Road Network used under Licence with the United Counties of Leeds and Grenville and the Ministry of Natural Resources. Property parcel boundaries used under Licence with the Teranet Enterprises Inc. Assessment Data used under Licence with the Municipal Property Assessment Corporation. Natural Resource Values Information from the Ontario Geospatial Data Exchange under Licence with the Ontario Ministry of Natural Resources copyright Queen's Printer for Ontario, 2007. Floodplain information is data owned and/or used under agreement with the Rideau Valley Conservation Authority.
 © October 18 2010

